

Crystalhue Mittens

Size

Women's medium (adjust needle size and yarn thickness or cast on a few extra stitches to reach the desired size)

Finished Measurements (after light blocking)

Total Mitten Length: 10 inches; *Hand Length:* 8 inches (my palm starts about 1/2 inch above the top of the cuff); *Thumb Length:* 2.5 inches *Gauge:* 24 sts / 30 rows = 4 inches

Materials

MC: 1 skein neutral worsted weight yarn

CC1: 1 skein variegated worsted weight yarn

CC2: 1 yard of white or cream yarn (worsted or sport weight) yarn

CC3: 1 yard of golden yarn (worsted or sport weight) yarn

Needles: 5 US #2/2.75 mm double pointed needles (adjust up or down to achieve gauge), yarn needle

Charts

A: Back of left hand

B: Left palm

C: Back of right hand

D: Right palm

Abbreviations

//: K2tog (right-slanting decrease)

\\: SSK (left-slanting decrease)

MC: Main color

CC1: Contrast color

CC2: Second contrast color

CC3: Third contrast color

Cuff Directions (same for both mittens)

MC: Cast on 48 stitches, divided evenly between 4 needles (12 stitches each).

Work K2 P2 ribbing until cuff reaches desired length (I recommend at least 2 inches).

Left Mitten Body

Work Chart A (back of left hand) for the first 25 stitches of each row and Chart B (left palm) for the last 23 stitches of each row.

On chart A, you have a choice!

MC and CC1 Only: You can work the chart in only two colors (MC and CC1 only), then use duplicate stitch at the end to form the body, beak, and feet of the bird (see finishing). Treat white and orange stitches as CC1 and the eye as MC.

MC, CC1, and CC2: Treat orange stitches as CC2, then work them at the end in CC3 using duplicate stitch. Treat the eye as MC.

The red line indicates the placement of the afterthought thumb.

Simple Bind Off: Bind off the last 8 stitches.

Elegant Bind Off: Bind off the center two stitches. Use kitchener stitch to graft the edging stitches. Pause to admire that beautiful, invisible join!

Left Mitten Thumb

MC: Pick up the stitches from the afterthought thumb, plus 2 stitches from each side of the hole (24 stitches total).

Knit around until thumb reaches desired length (about 2.5 inches).

K2tog all the way around until 6 stitches remain, then bind off.

Right Mitten Body

Work Chart C (back of right hand) for the first 25 stitches of each row and Chart D (right palm) for the last 23 stitches of each row. Treat colors as you did for left mitten.

The red line indicates the placement of the afterthought thumb.

Bind off as you did for left mitten.

Right Mitten Thumb

MC: Pick up the stitches from the afterthought thumb, plus 2 stitches from each side of the hole (24 stitches total).

Knit around until thumb reaches desired length (about 2.5 inches).

K2tog all the way around until 6 stitches remain, then bind off.

Finishing

If you worked Charts A and C using MC, CC1, and CC2, use a yarn needle and duplicate stitch to stitch over the beak and feet stitches in CC3. Weave in loose ends, block mittens to desired size, then trim the ends.

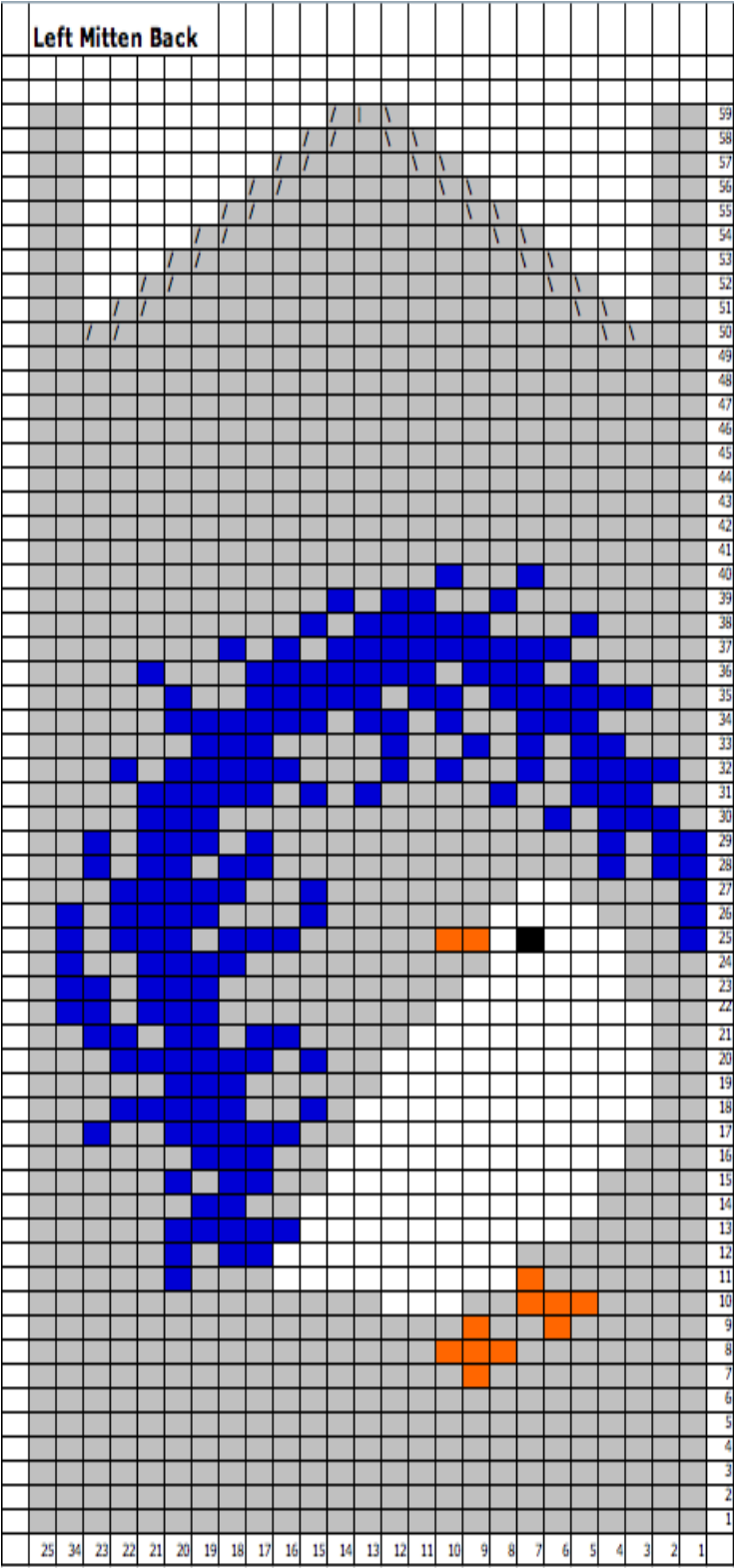
If you worked Charts A and C using only MC and CC1, use a yarn needle and duplicate stitch to stitch over the stitches shown as white and orange on the charts as follows.

CC2: Stitch over the body of the bird (in white on pattern) using duplicate stitch.

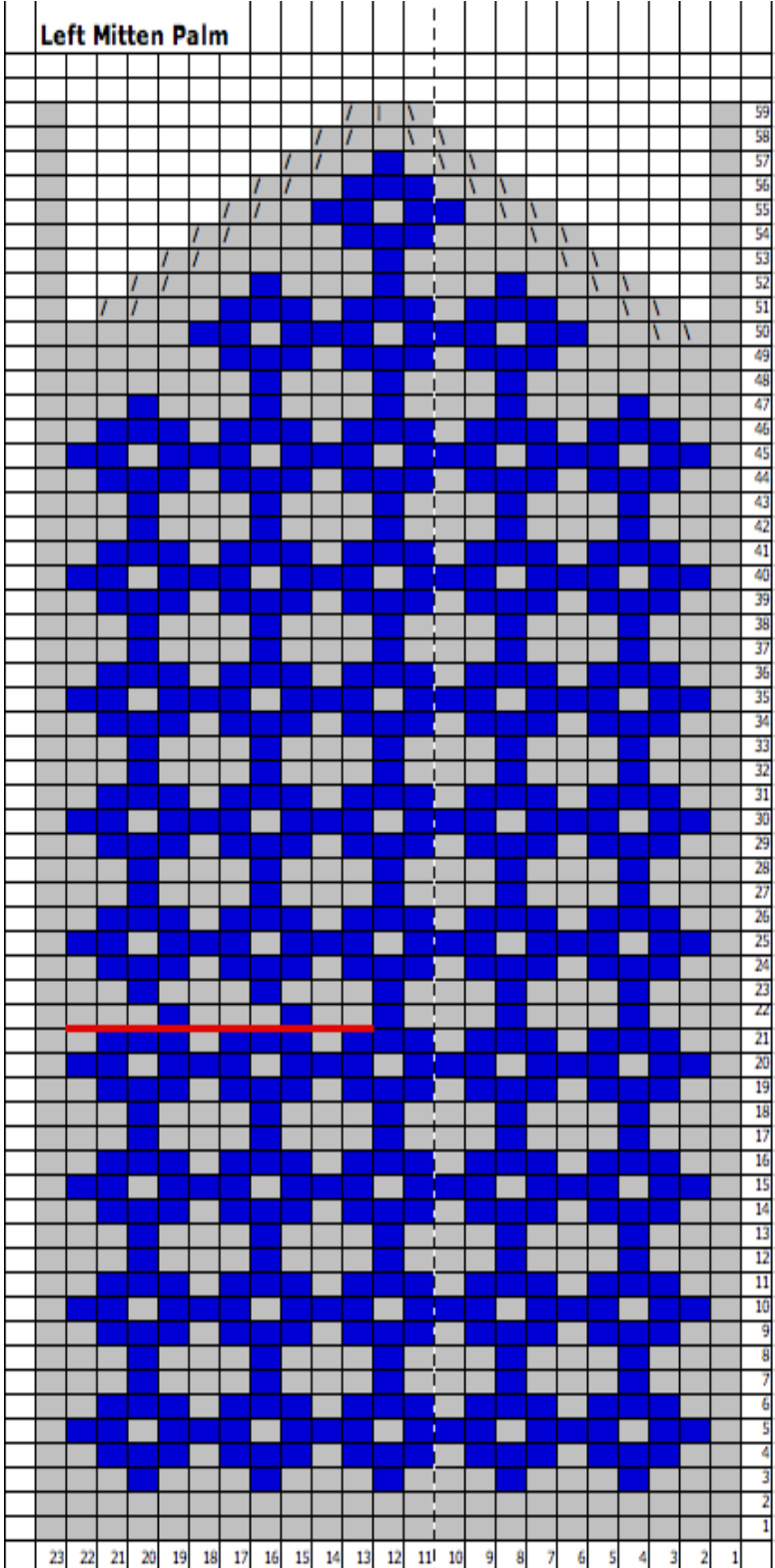
CC3: Stitch over the beak and feet of the bird (in orange on pattern) using duplicate stitch.

Weave in loose ends, block mittens to desired size, then trim the ends.

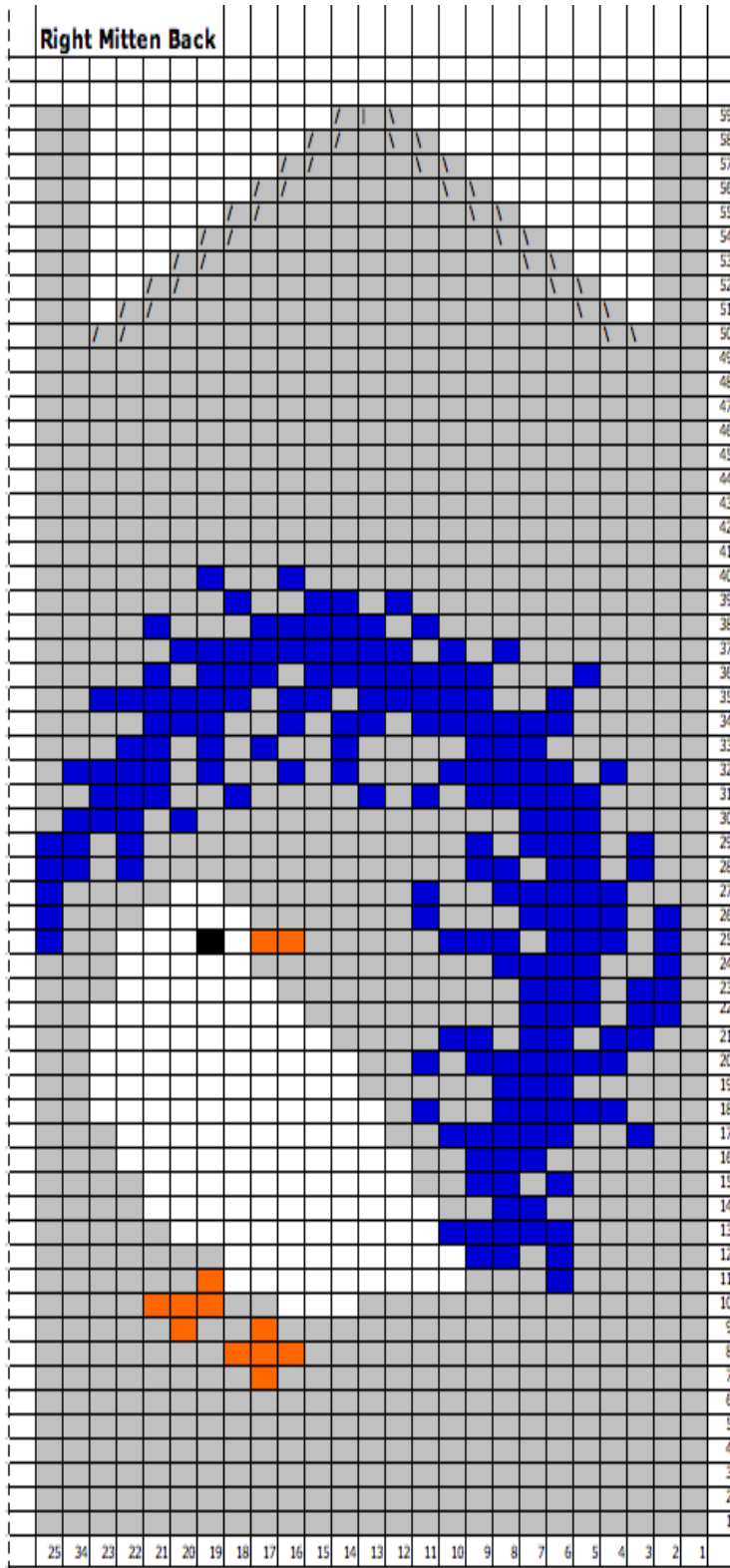
A. Back of Left Hand



B. Left Palm



E. Back of Right Hand



F. Right Palm

