

IRON GODS MITTENS

Size

Women's medium (Adjust needle size and yarn thickness or cast on a few extra stitches along the mitten edges to reach the desired size. For men's medium, try worsted weight yarn and size 3 needles.)

Finished Measurements (after light blocking)

Total Mitten Length: 10 inches

Hand Length: 8 inches (including Latvian braid)

Thumb Length: 2.5 inches

Gauge: 30 sts / 36 rows = 4 inches

Charts

A: Left palm

B: Right palm

C: Back of hand

Materials

MC: 1 skein black sport weight yarn

CC1: 1 skein white sport weight yarn

CC2: 2 yards of red sport weight yarn (optional!)

Needles: 5 US #1/2.25 mm double pointed needles
(adjust up or down to achieve gauge), yarn needle

Abbreviations

//: K2tog (right-slanting decrease)

\\: SSK (left-slanting decrease)

MC: Main color

CC1: Contrast color

CC2: Second contrast color

Cuff

MC: Cast on 60 stitches, divided evenly between 4 needles (15 stitches each).

Work K2 P2 ribbing until cuff reaches desired length (I recommend at least 2 inches).

Knit 1 row.

Optional: Work 1 round of K1 MC, K1 CC2, then work Latvian braid using MC and CC2.

Mitten Body

Left Mitten: Work Chart A (left palm) for the first 30 stitches of each row and Chart C (back of hand) for the last 30 stitches of each row.

Right Mitten: Work Chart B (right palm) for the first 30 stitches of each row and Chart C (back of hand) for the last 30 stitches of each row.

Thumb: The red line indicates the placement of the afterthought thumb.

Simple Bind Off: Bind off the last 8 stitches.

Elegant Bind Off: Bind off the center three stitches from each side. Use kitchener stitch to graft the edging stitches.
Pause to admire that beautiful, invisible join!

Afterthought Thumb

MC: Pick up the stitches from the afterthought thumb, plus 2 stitches from each side of the hole (28 stitches total).

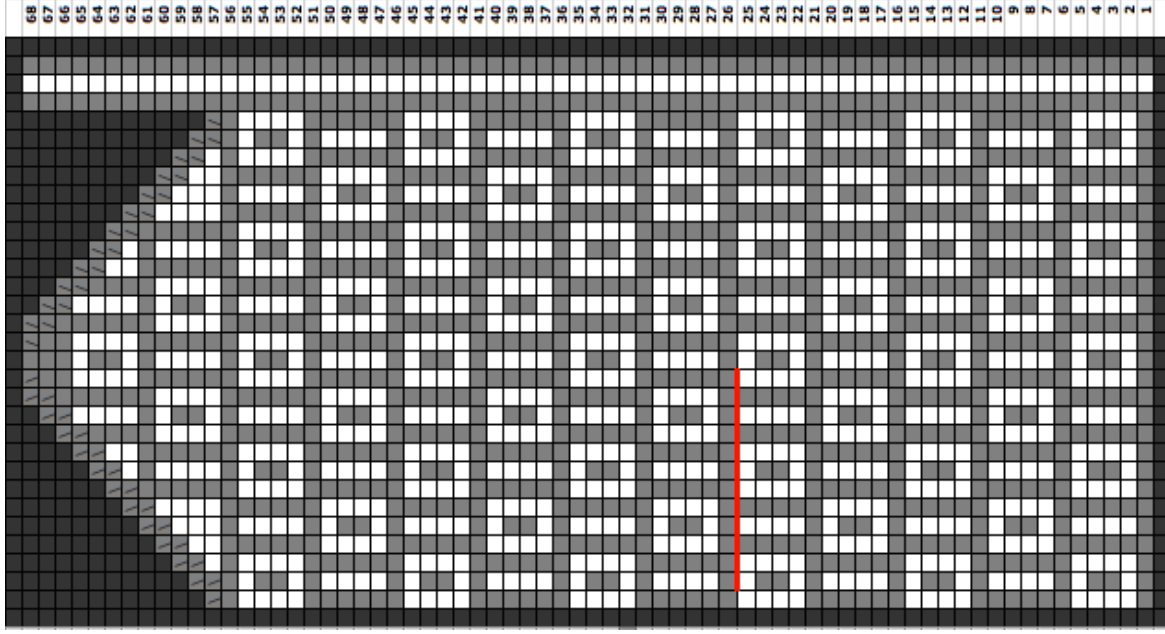
Knit around until thumb reaches desired length (about 2.5 inches).

K2tog all the way around until 7 stitches remain, then bind off.

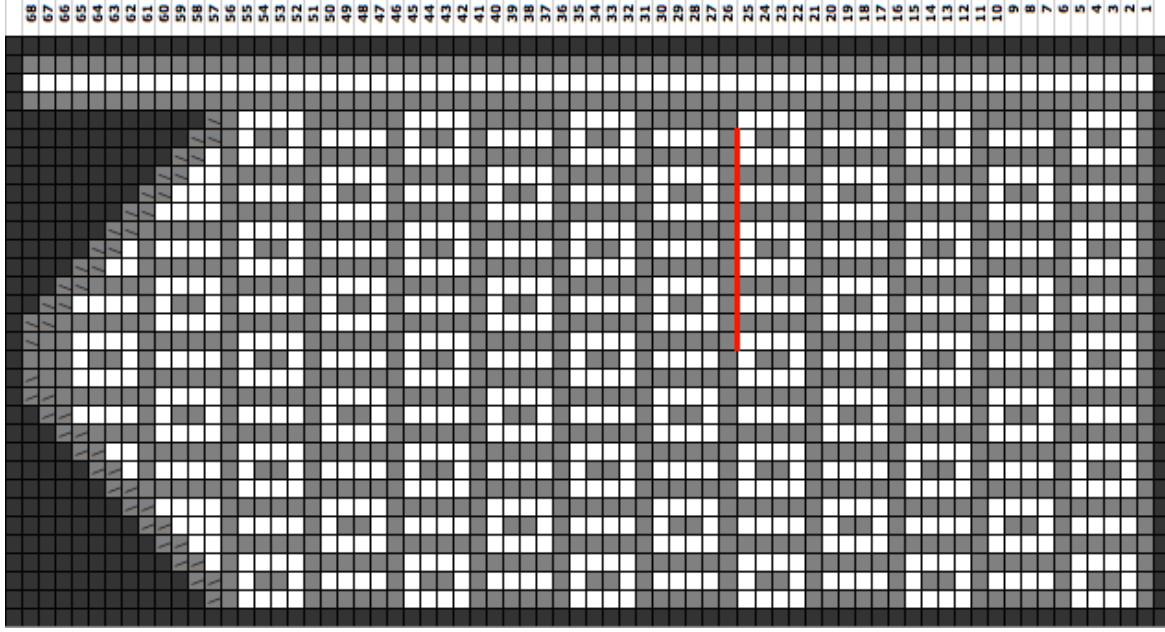
Finishing

Weave in loose ends, block mittens to desired size, then trim the ends.

A. LEFT PALM



B. RIGHT PALM



C. BACK OF HAND

