

Reign of Winter Mittens

Size

Women's medium (adjust needle size and yarn thickness or cast on a few extra stitches to reach the desired size)

Finished Measurements (after light blocking)

Total Mitten Length: 10 inches; *Hand Length:* 8 inches (my palm starts about 1/2 inch above the top of the cuff); *Thumb Length:* 2.5 inches *Gauge:* 24 sts / 30 rows = 4 inches

Materials

MC: 1 skein blue worsted weight yarn

CC: 1 skein cream or white worsted weight yarn

CC2: 1 yard of golden yarn (worsted or sport weight) yarn

Needles: 5 US #2/2.75 mm double pointed needles (adjust up or down to achieve gauge), yarn needle

Charts

A: Back of left hand

B: Left palm

C: Left thumb, front

D: Left thumb, back

E: Back of right hand

F: Right palm

G: Right thumb, front

H: Right thumb, back

Abbreviations

//: K2tog (right-slanting decrease)

\\: SSK (left-slanting decrease)

M: Make 1 stitch.

MC: Main color

CC: Contrast color

CC2: Second contrast color

Useful Links

[Afterthought Thumbs](#), [Duplicate Stitch](#), [Kitchener Stitch](#)

Cuff Directions (same for both mittens)

MC: Cast on 48 stitches, divided evenly between 4 needles (12 stitches each).

Work two-color ribbing (k2 in MC, p2 in CC) until cuff reaches desired length (I usually aim for at least 2 inches).

MC: Knit 1 row.

Left Mitten Body

Work Chart A (back of left hand) for the first 24 stitches of each row and Chart B (left palm) for the second 24 stitches of each row.

The red line indicates the placement of the afterthought thumb.

Simple bind off: When you reach the end of these charts, bind off the last 12 stitches.

Elegant bind off: Leaving the edging stitches (the first three stitches on each chart) on your needles, bind off the remaining stitches. Using CC, use kitchener stitch to graft the edging stitches. Pause to admire that beautiful, invisible join!

Left Mitten Thumb

Pick up the stitches from the afterthought thumb.

Work charts C and D (front and back of left thumb).

Simple bind off: When you reach the end of these charts, bind off the last 8 stitches.

Elegant bind off: Leaving the edging stitches (the first stitch on each chart) on your needles, bind off the remaining stitches. Using CC, use kitchener stitch to graft the edging stitches.

Right Mitten Body

Work Chart E (back of right hand) for the first 24 stitches of each row and Chart F (right palm) for the second 24 stitches of each row.

The red line indicates the placement of the afterthought thumb.

Bind off.

Right Mitten Thumb

Pick up the stitches from the afterthought thumb.

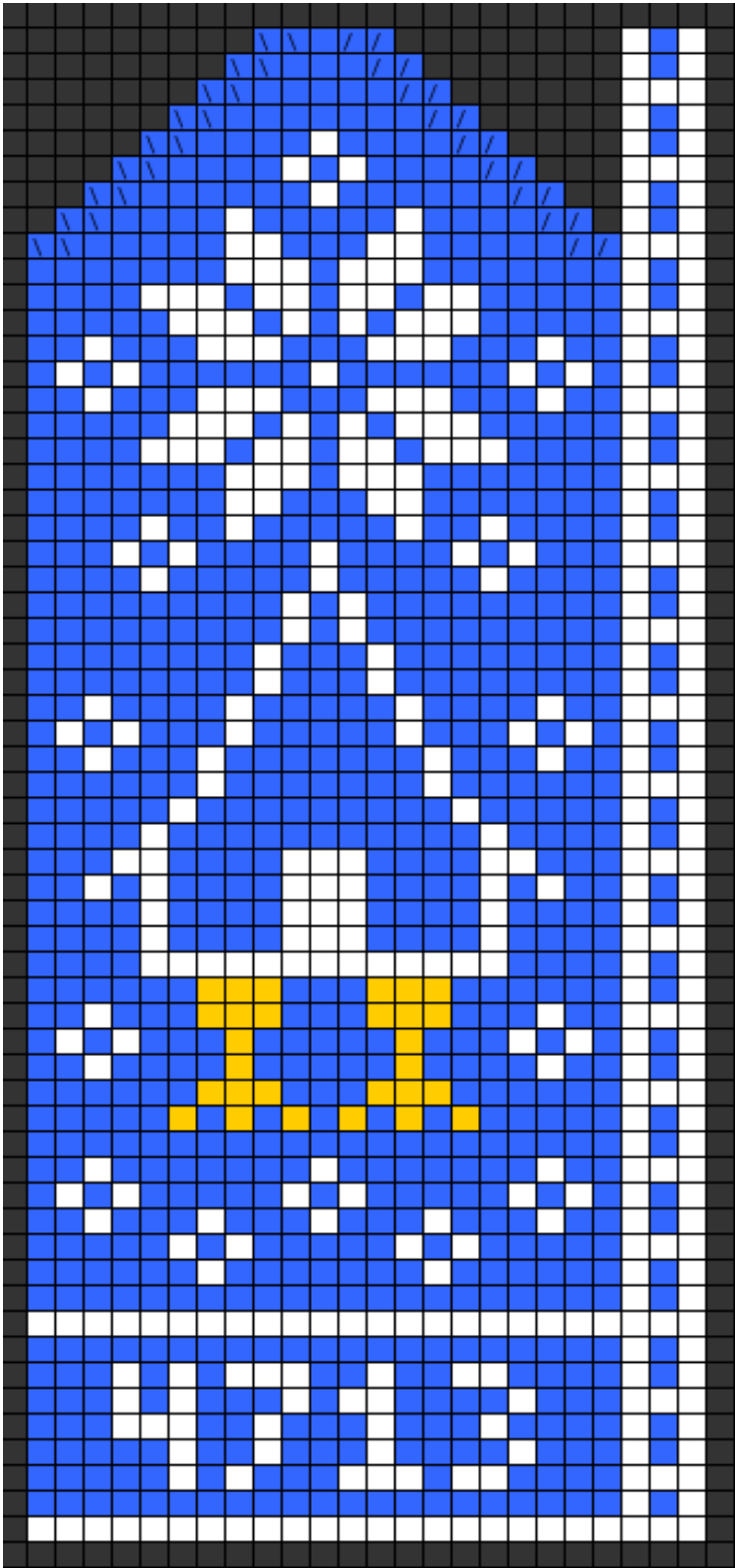
Work charts G and H (front and back of right thumb).

Bind off.

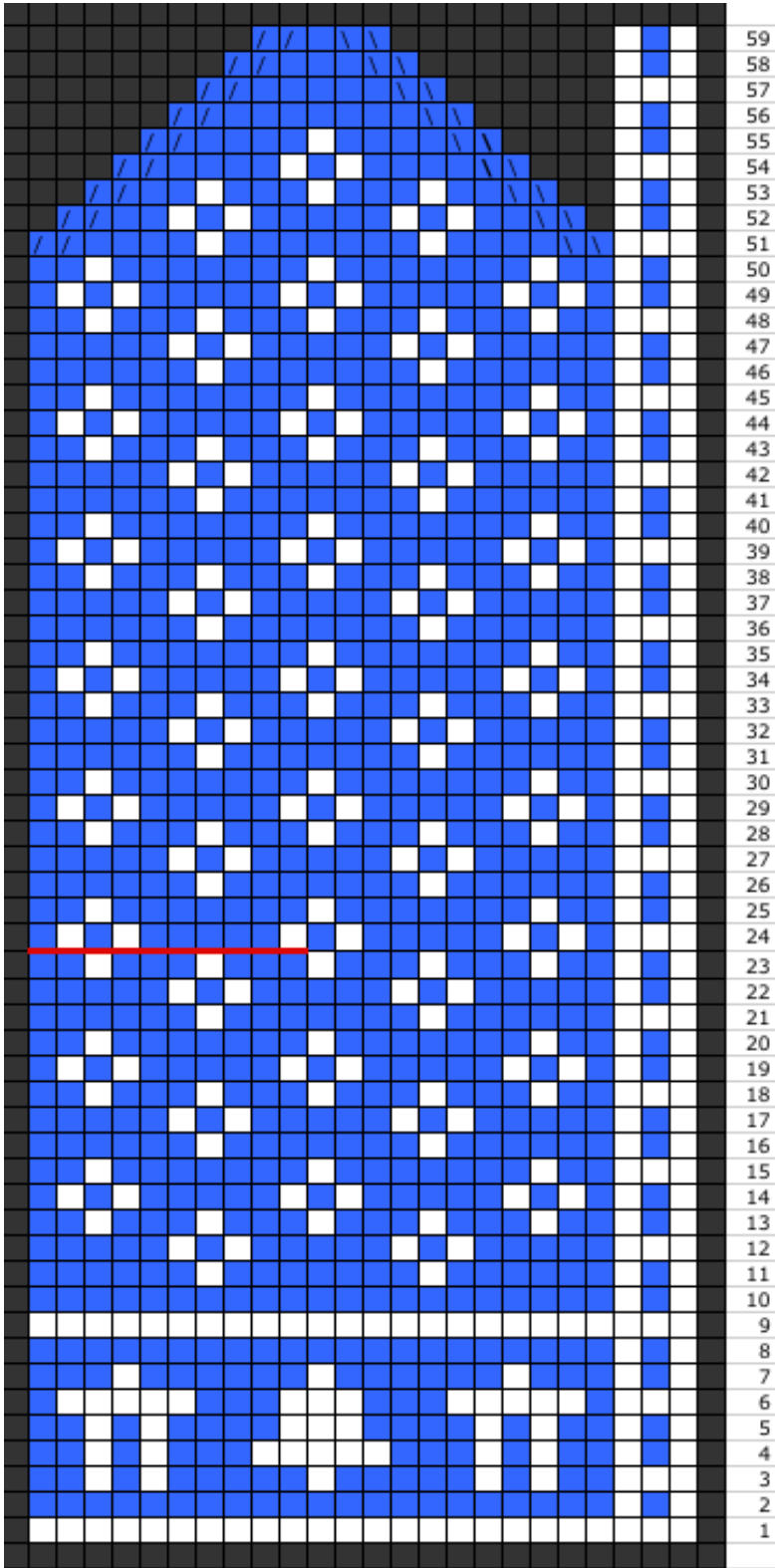
Finishing

Using a yarn needle and CC2, stitch over the legs of the huts using duplicate stitch. Weave in loose ends, block mittens to desired size, then trim the ends.

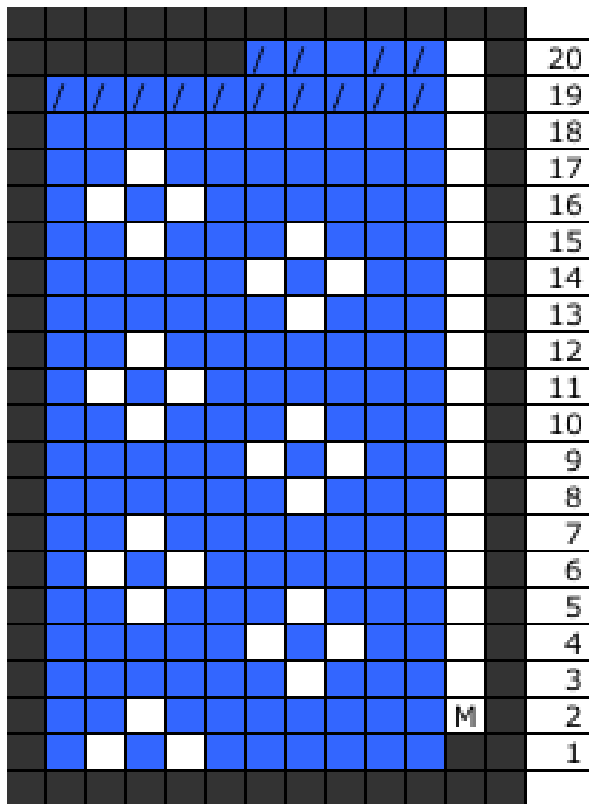
A. Back of Left Hand



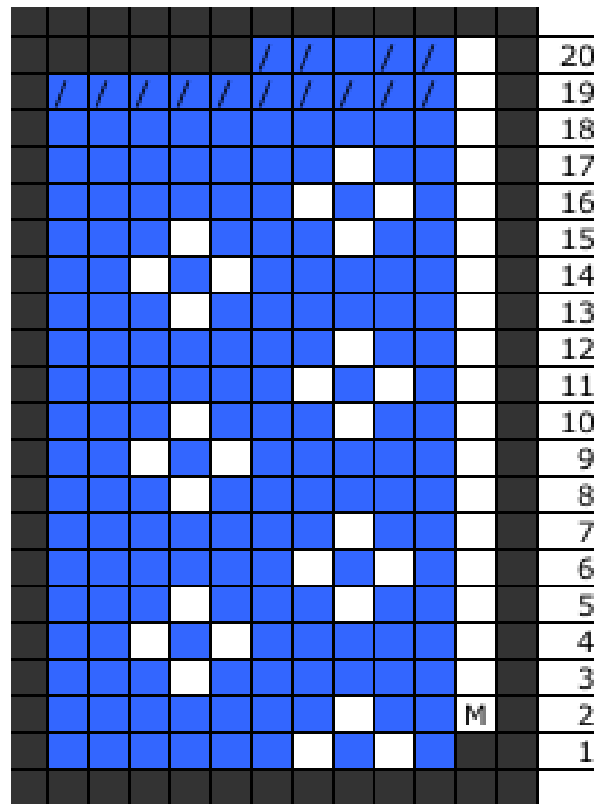
B. Left Palm



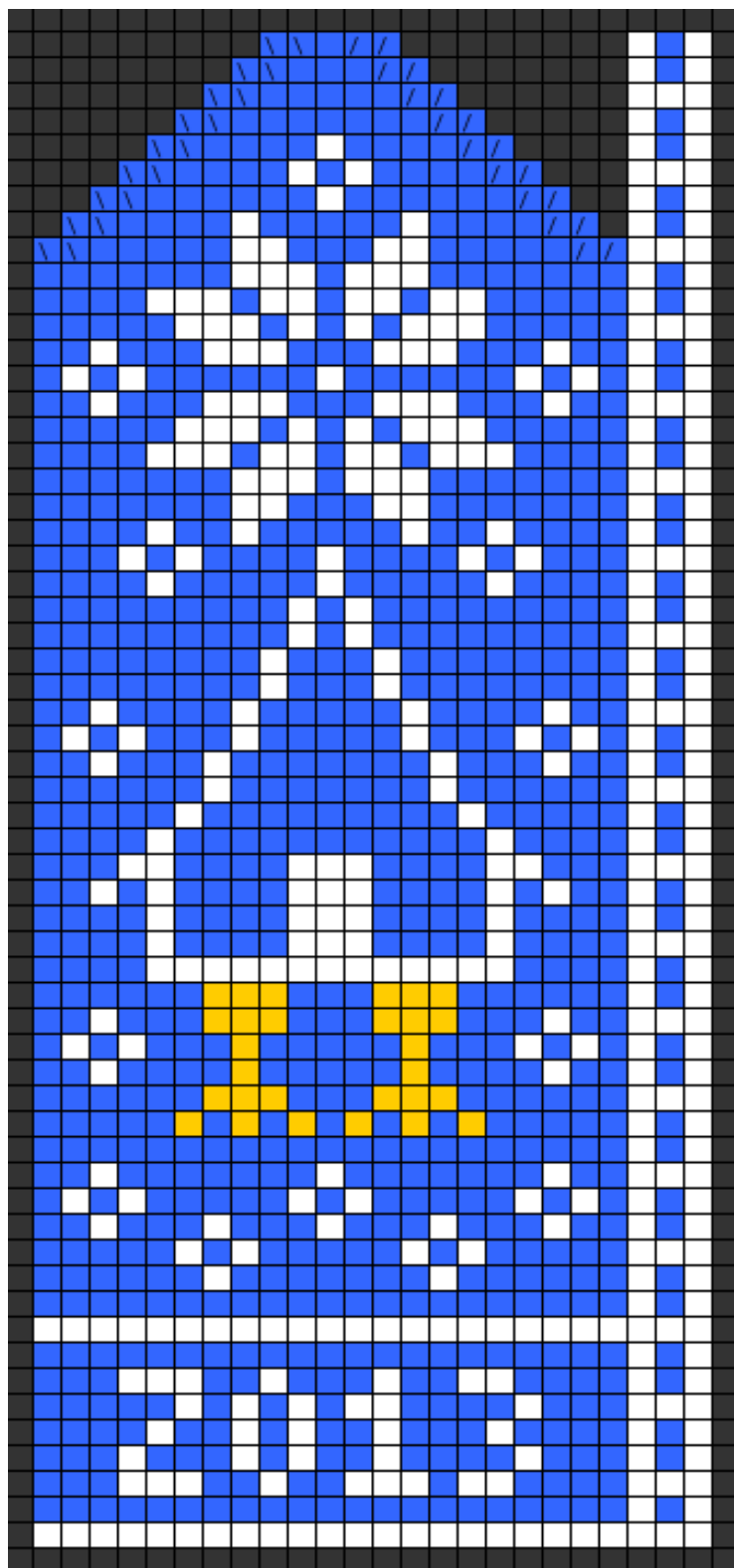
C. Left Thumb, Front



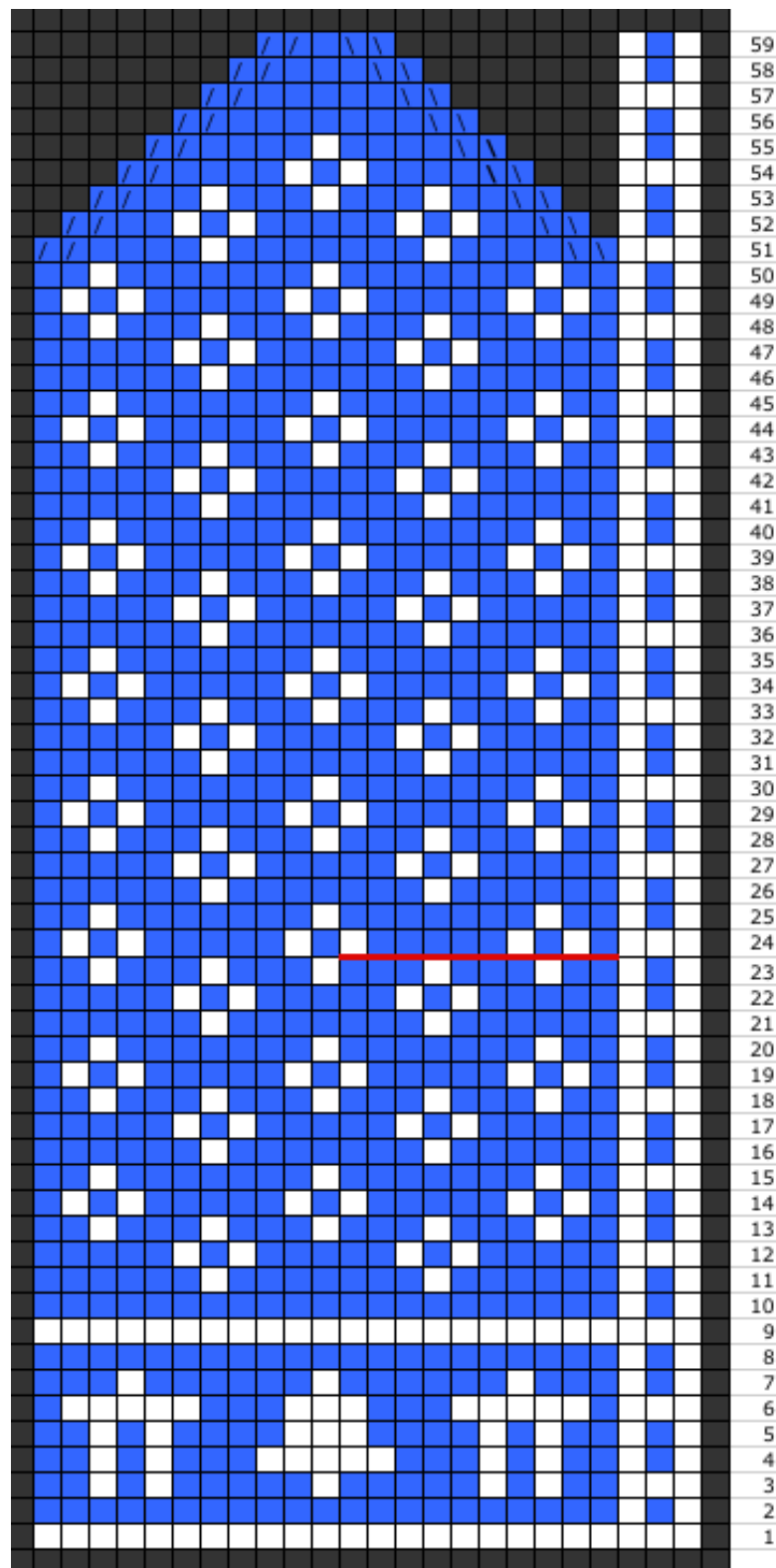
D. Left Thumb, Back



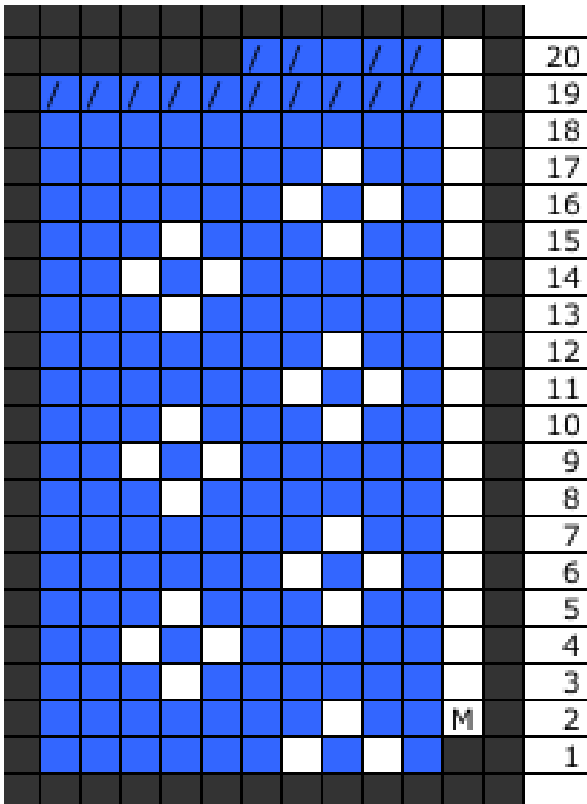
E. Back of Right Hand



F. Right Palm



G. Right Thumb, Front



H. Right Thumb, Back

